

# Composite Case: Intercomparison of Single Column Models

Irina Sandu & Suvarchal K Cheedela,  
Sara Dal Gesso, Hideaki Kawai, Martin  
Koehler, Pier Siebesma, Bjorn Stevens

29 September, De Bilt



Goal: To translate our understanding of transitions in cloudiness from observations and LES models to climate models through single column models.

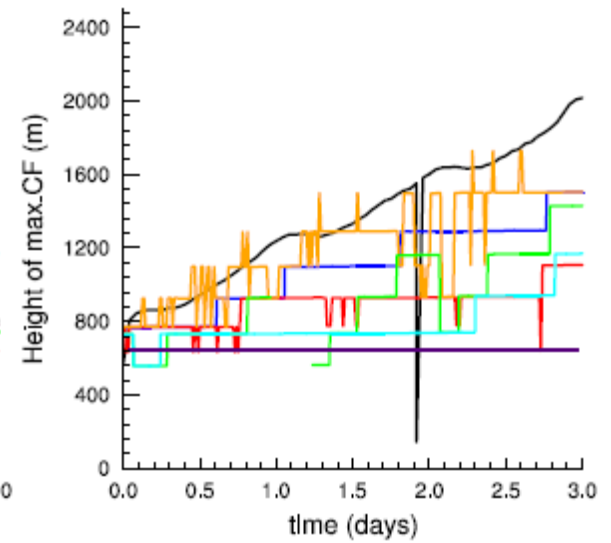
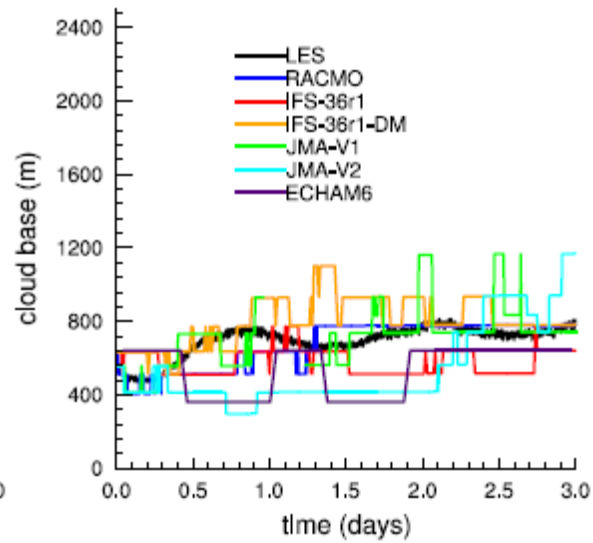
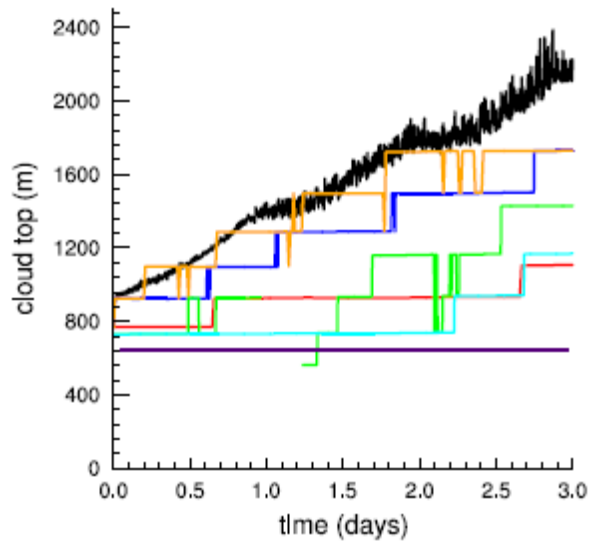


Model	PBL Scheme	Vertical Levels: Under 1km	Cloud
RACMO (Sara, Pier)	DM-flux	91 : 13	Prognostic, stat
IFS-36r1 (Martin , Irina)	K-profile/expl entr.		Prognostic
IFS-36r1-DM (Martin)	DM-flux		Prognostic
JMA1 (Hideaki Kawai)	Mellor-Yamada	60 : 10	Stat(Smith)
JMA2 (Hideaki Kawai)	Mellor-Yamada,expl entr		Stat(Smith)
ECHAM6 (Suvarchal, Bjorn)	TKE-moist	31 : 5	Prog,Stat (Tompkins 2002)

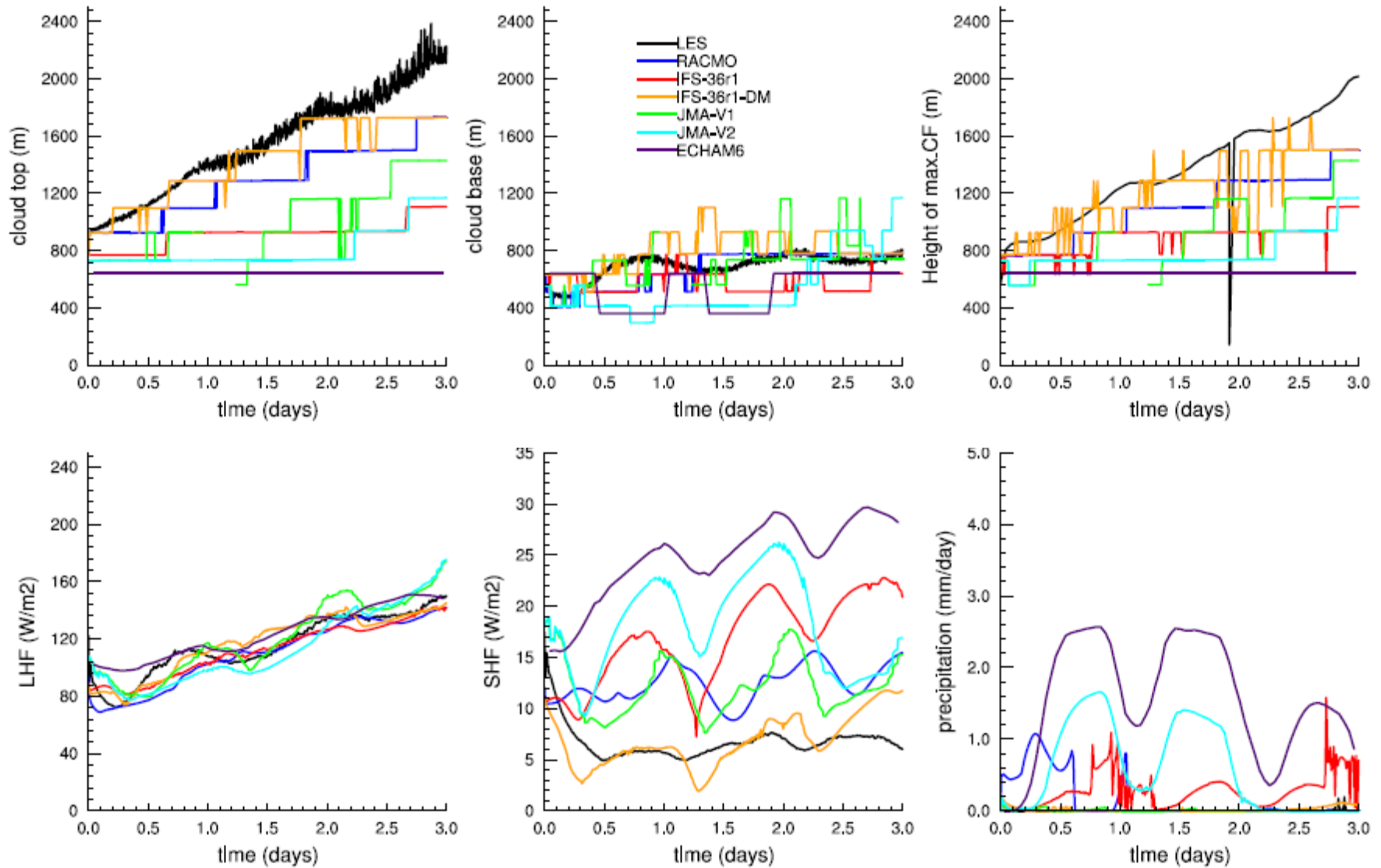
There is more space for you!

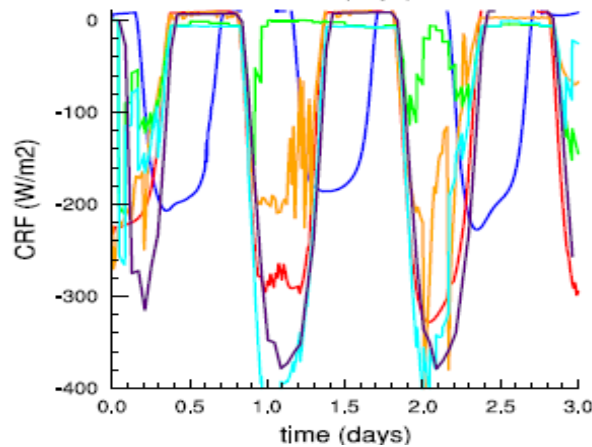
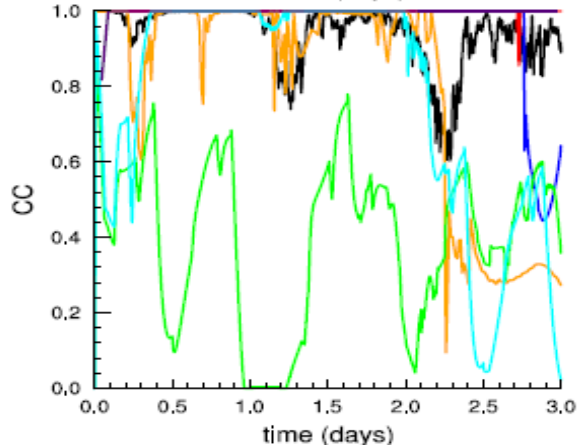
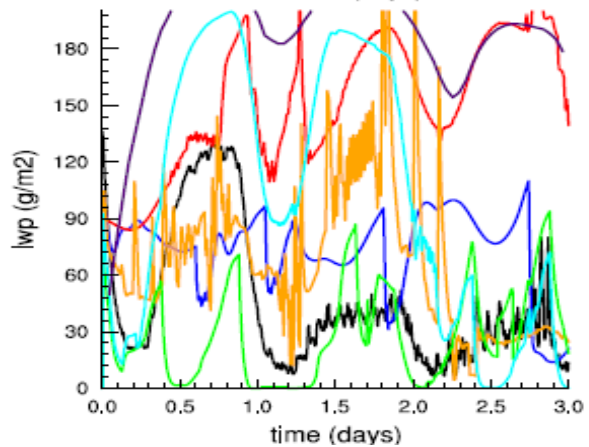
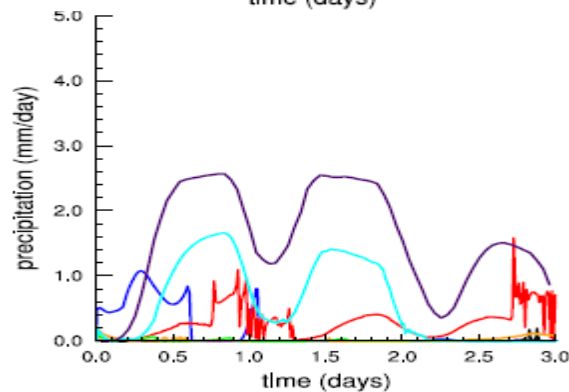
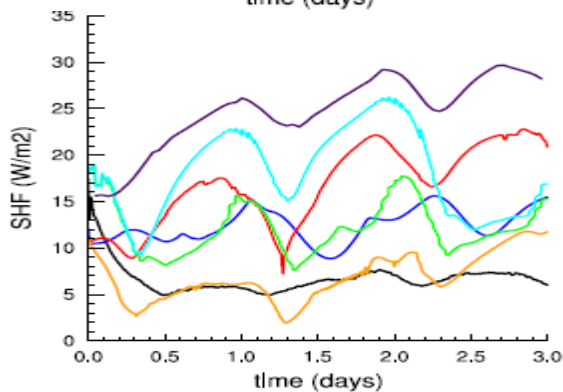
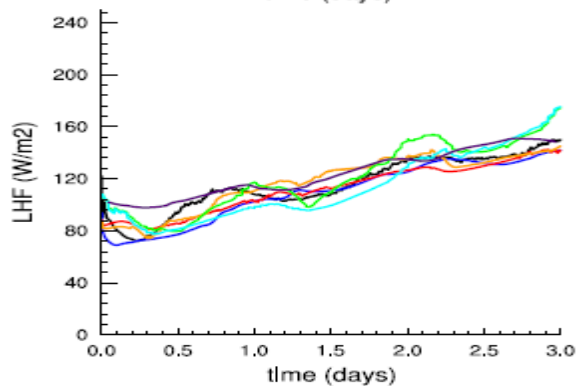
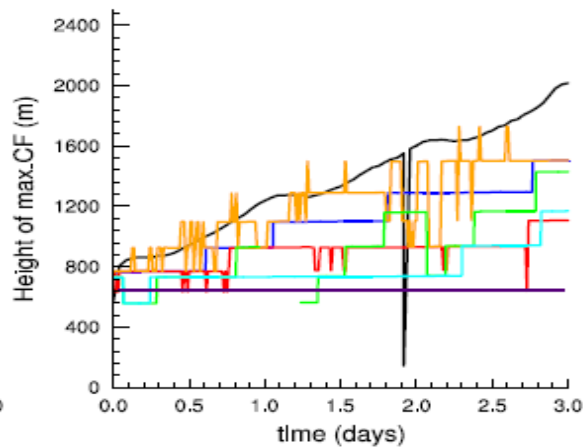
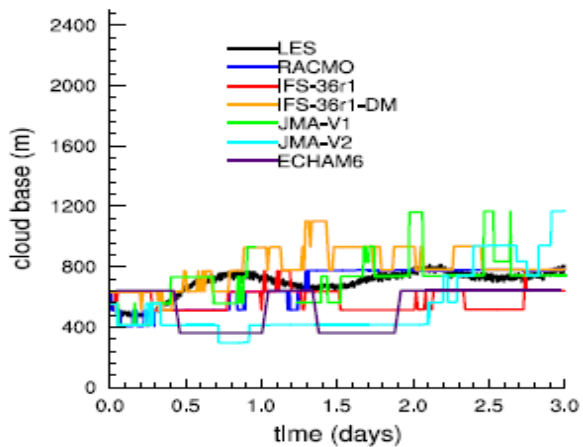
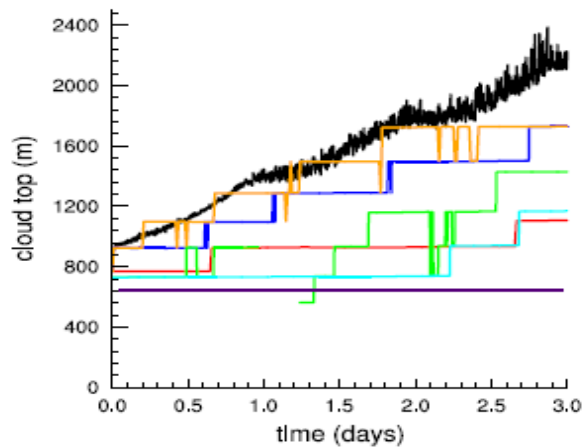


# Reference case

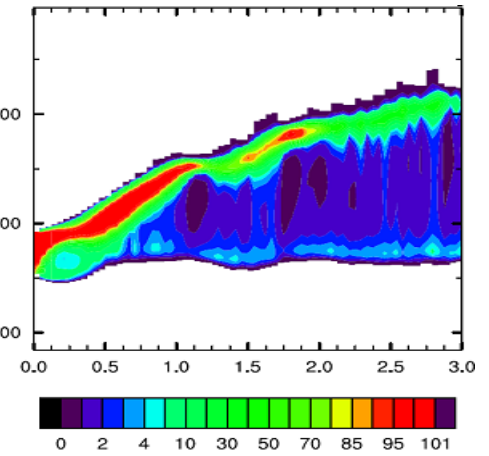
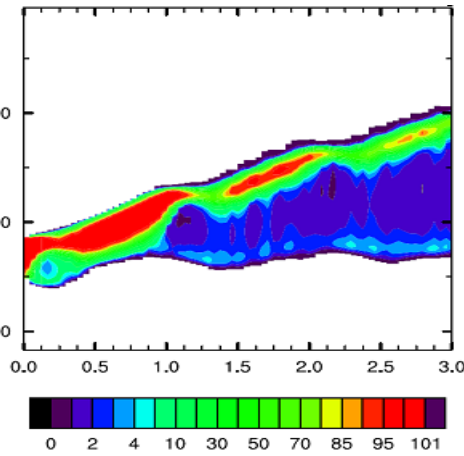
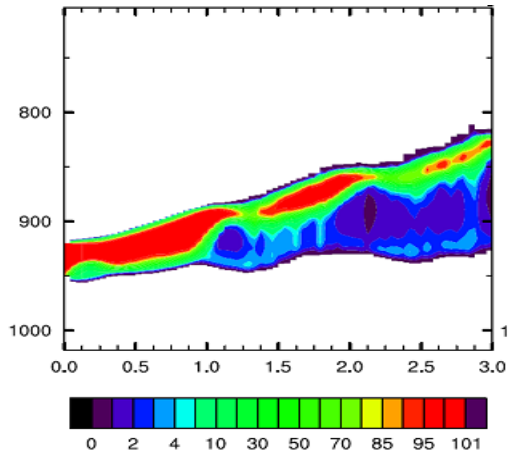


# Reference case

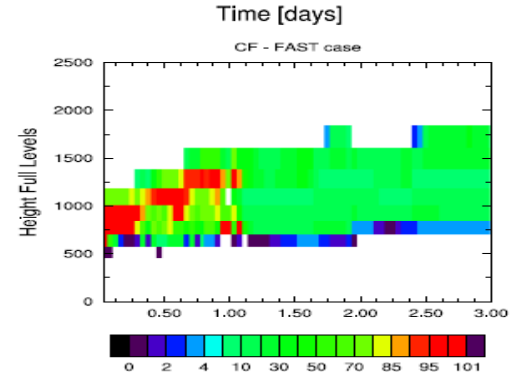
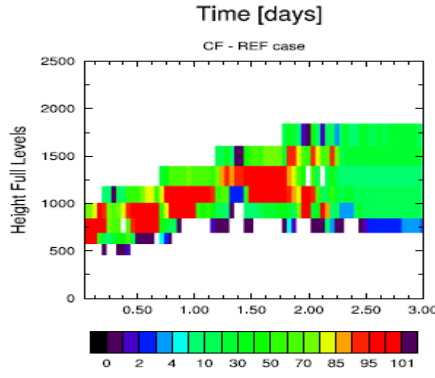
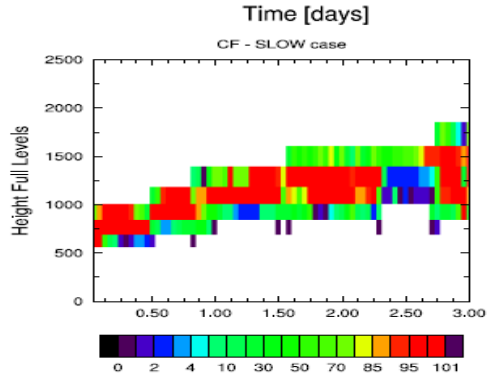




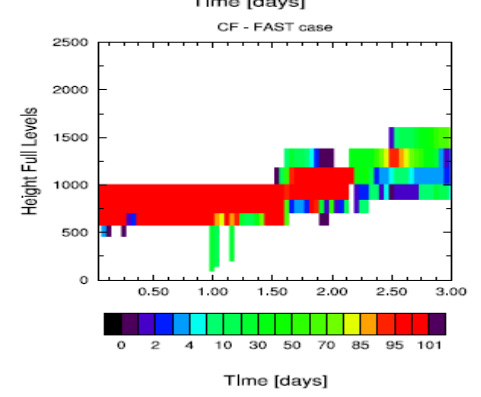
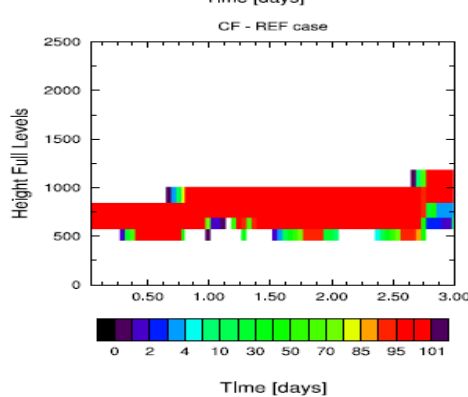
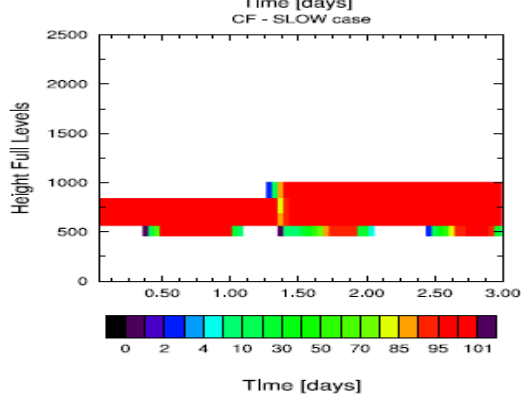
LES



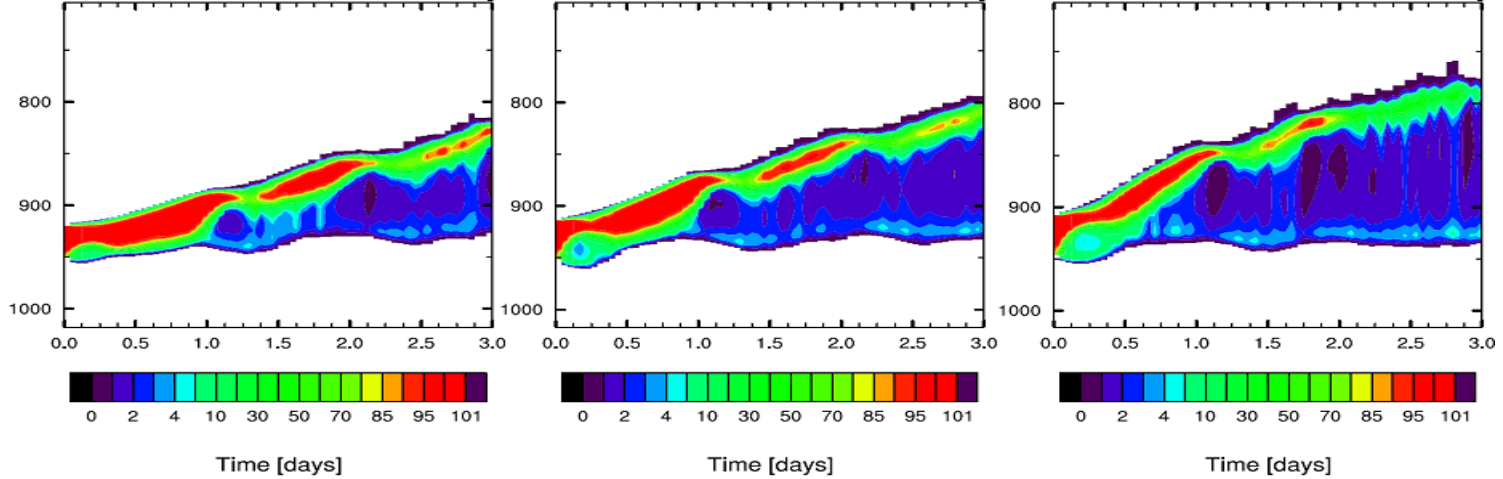
I-DM



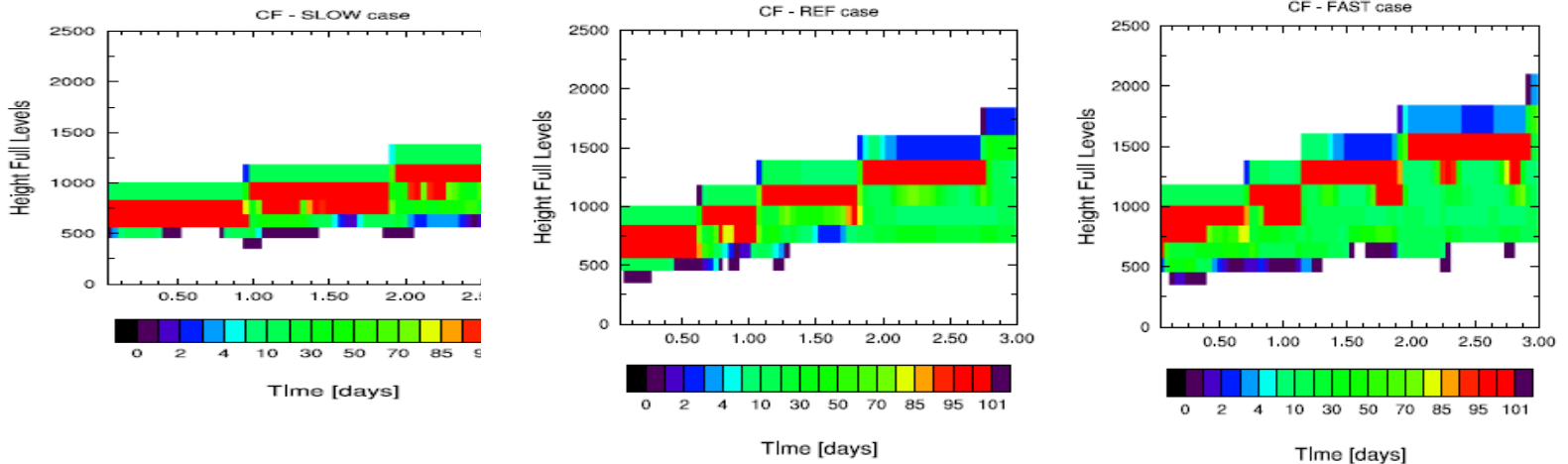
IFS



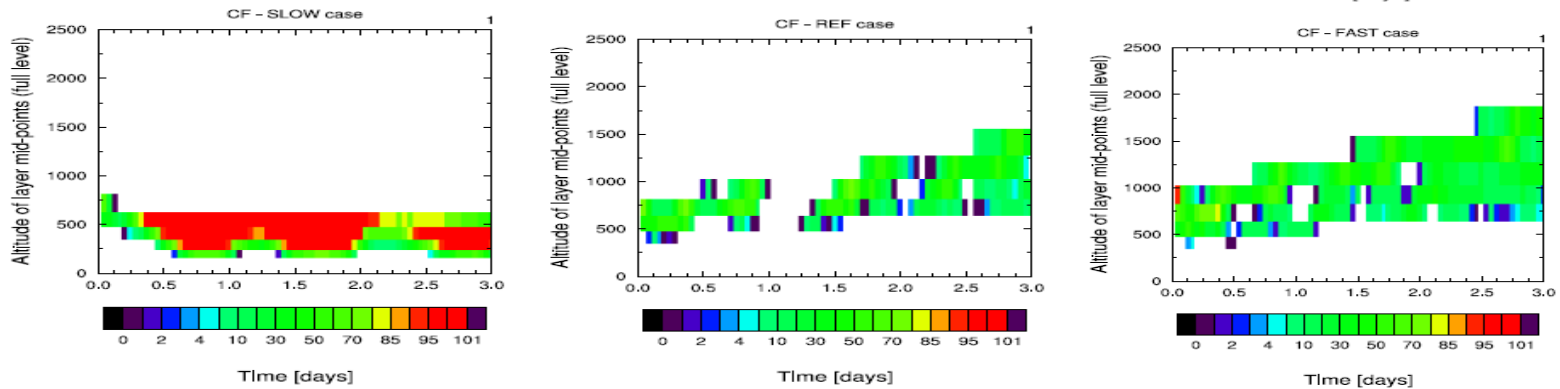
LES



RAC

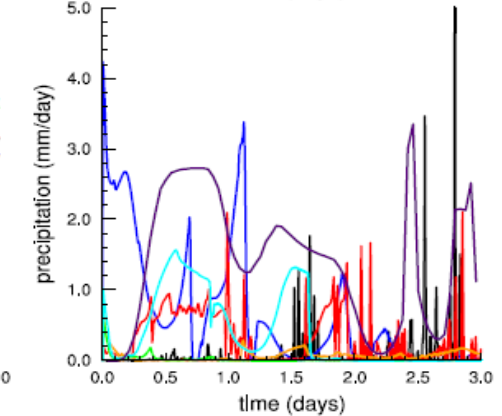
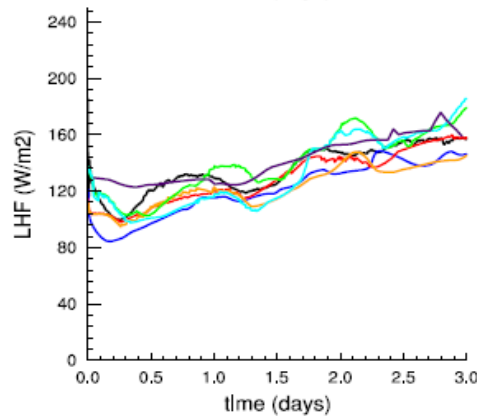
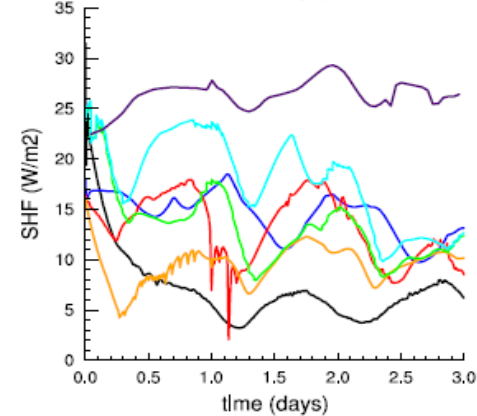
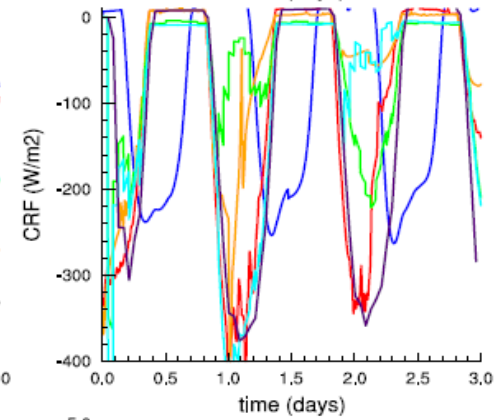
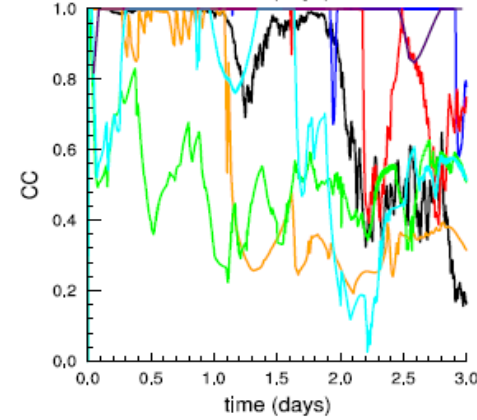
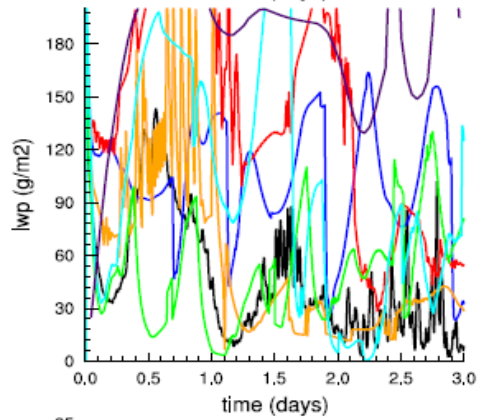
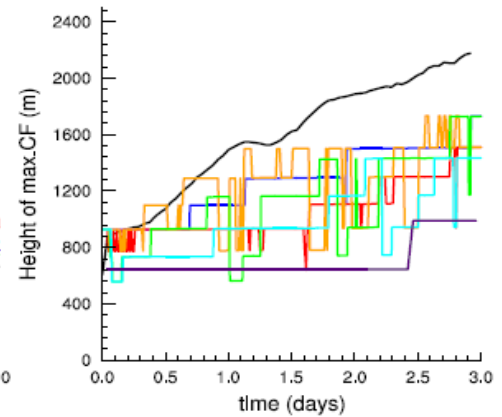
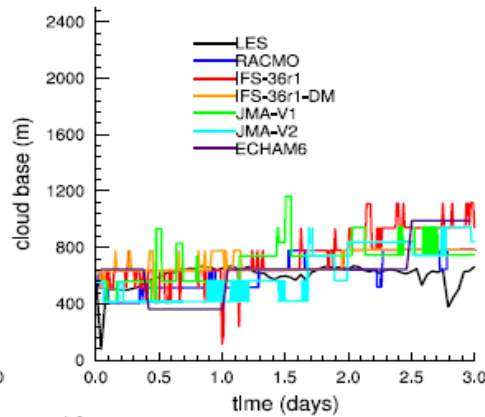
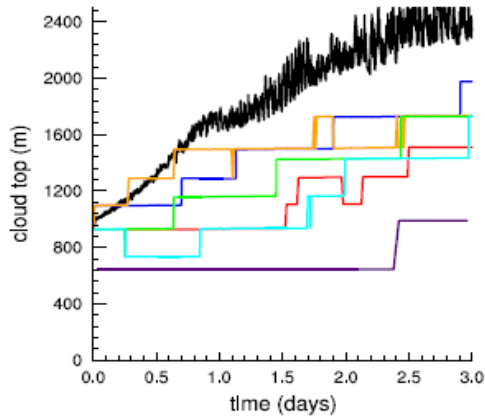


LES

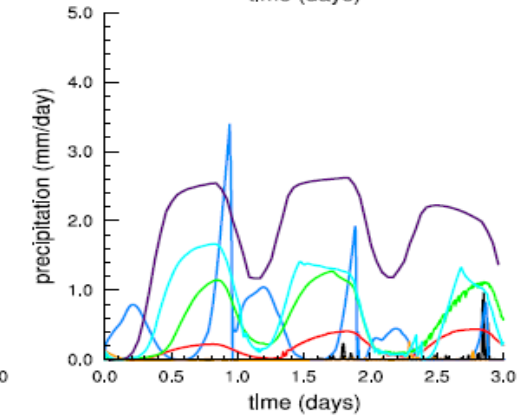
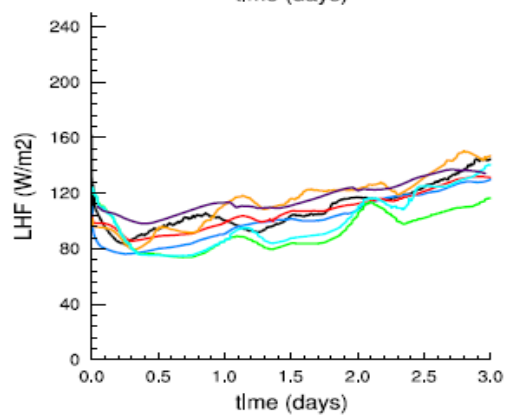
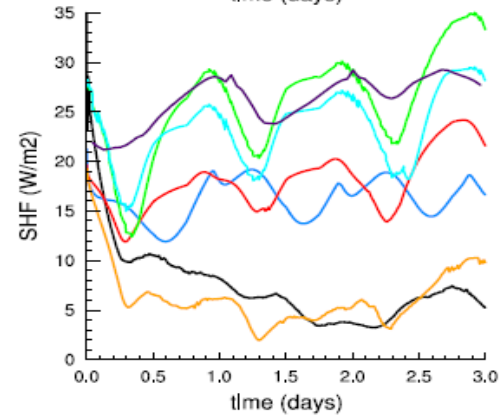
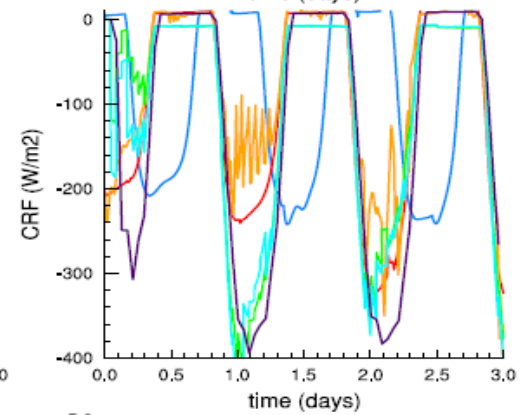
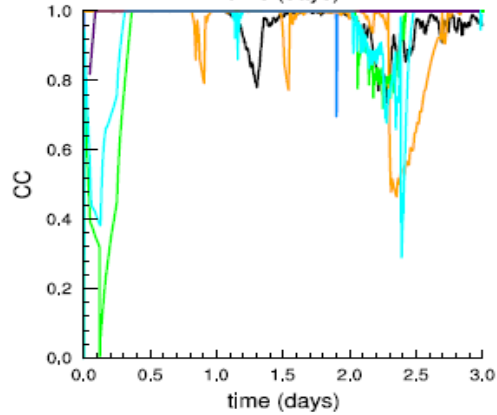
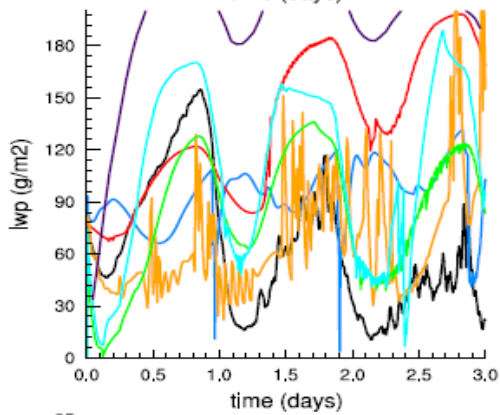
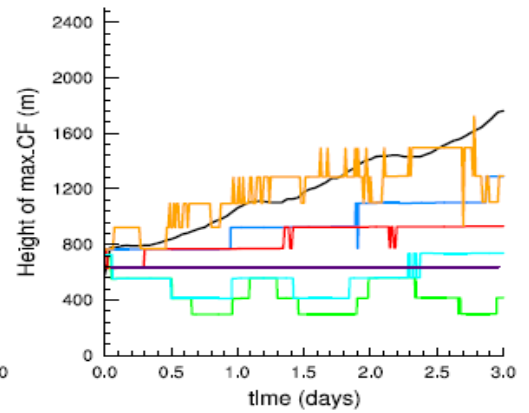
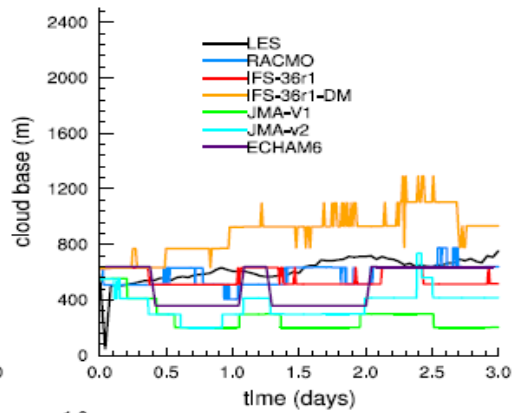
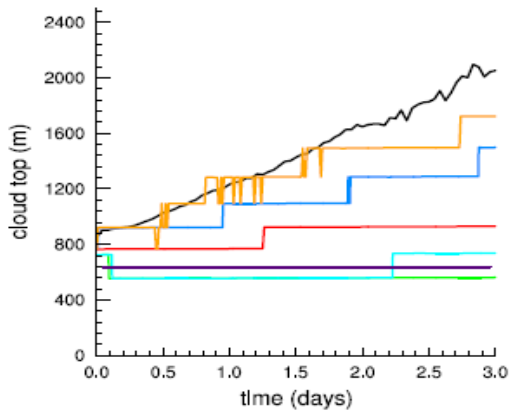




Fast



Slow



# Future....

→ Future looks promising, participate in the ongoing Intercomparisons.

→ lets synchronize more in the case setup.

Email: [suvarchal.kumar@zmaw.de](mailto:suvarchal.kumar@zmaw.de)

